

(Table 1) Connection Schematics

	<b>Function Description</b>	<b>SENTECH ALX 300 Cables</b>	<b>GULERYUZ VEHICLE Cables</b>	<b>Con. Position on Vehicle Side</b>
1	Battery feed (KL-30): Continuous Battery Supply nominal +24V	Red/Con.	ALK KL30(white)	Fuse Card-2, Fuse 4
2	Ground (KL-31)	Black/Con.	GND (brown)	Brown (Chassis)
3	Ignition (KL-15)	Blue/Con.	ALK KL15 (white)	Fuse Card-2, Fuse 5
4	Start Relay In	Gray/Con.	ALK Marş Giriş (white)	Rear Bord Comb. Socket 8, Pin 16 or 17
5	Start Relay Out	Brown/Con.	ALK Marş Çıkış(white)	Rear Board Comb Socket 8, Pin 16 or 17
6	Override	GND: Black SW: Orange		Red Button

**Safety risks at installation and items to be considered**

The vehicle power switch shall be turned off against short circuits and shock

Please connect the **SENTECH ALX 300 Cables** and **GULERYUZ VEHICLE Cables** in the Connection Schematics so that they align with each other on the connector.

**Assembly Instruction**

Unlock the two locks on the dashboard cover shown in Figure 1, which is located above the driver's seat.

Find The 63N025 numbered alcohol lock connector which is shown in Figure 6. Insert the cables into the connector numbered 63N025 according to the pin numbers indicated in Table 1. Once the connector is connected, the ECU will activate.

Mount the Control Unit as shown in figure 3. Then install the ethernet cable along the route shown in Figure 4 by taking the exit from the position in Figure 3.

Mount the Handset device to the previously prepared position as shown in Figure 5 and make the ethernet connection.

Control Unit protection fuses are Fuse 4 and Fuse 5 located on Fuse Card-2 shown in Figure 2.

The start relay out from the alcoholmeter is connected to pin 16 and 17 of the Combinational socket 8 of the rear panel, and the relay in is connected to pin 17 of the Combinational socket 8

	<p><b><u>Modification of vehicle operation</u></b></p> <p>The start button must be pressed for the vehicle to start. The alcohol interlock completes the connection between the ignition and the starter relay, allowing the vehicle to start. In the absence of an alcohol interlock, the circuit must be physically shorted. Shorting the Start Relay In and Start Relay Out wires makes the physical connection.</p> <p>In case of a malfunction in the alcohol lock control unit, the vehicle can be started for one time by pressing the connected override button. After pressing the button, the vehicle must be taken to the nearest service point. Otherwise, it will not be restarted.</p>
	<p><b><u>Mounting position of alcohol interlock handset and the alcohol interlock control-unit</u></b></p> <p>Position of the alcohol interlock control unit show in picture 3. The position of the handset should be on the left side of the driver's console as shown in picture 5.</p>



Figure 1

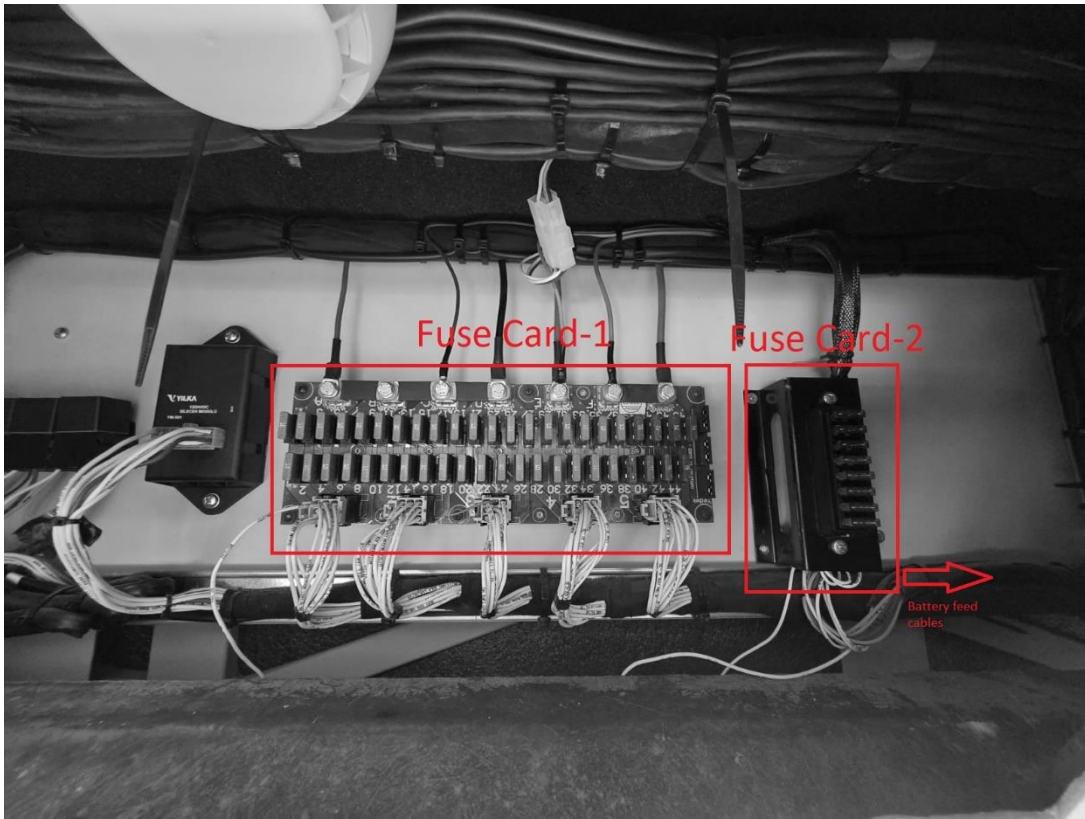


Figure 2

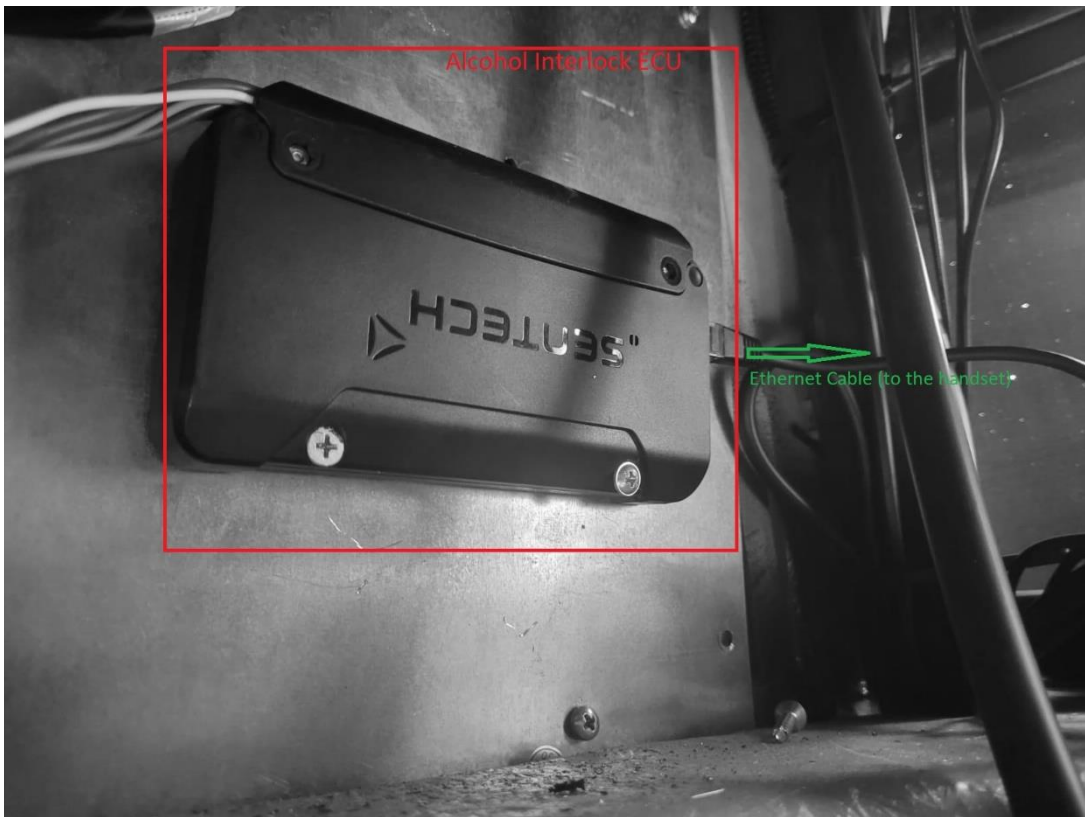


Figure 3

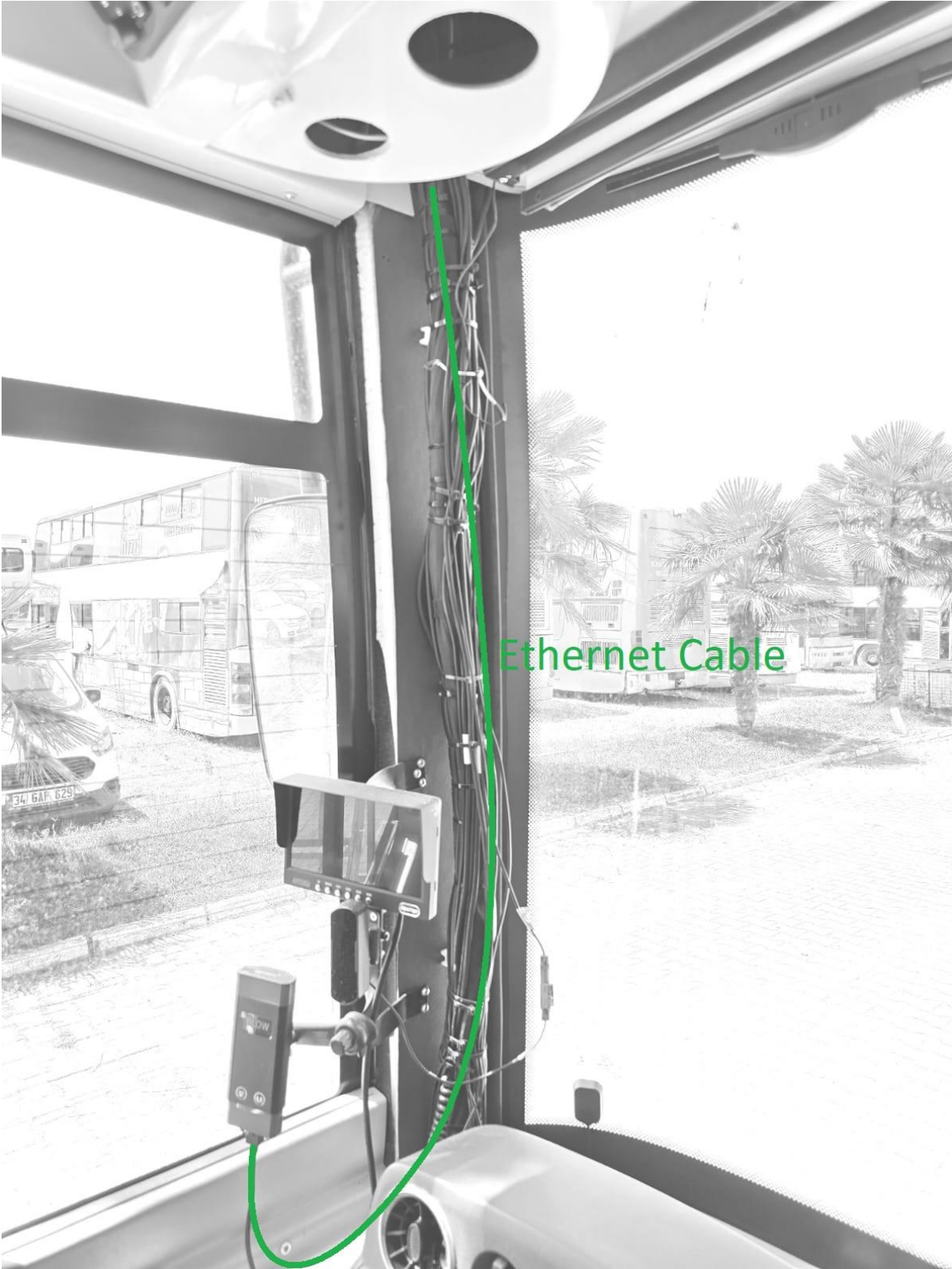


Figure 4



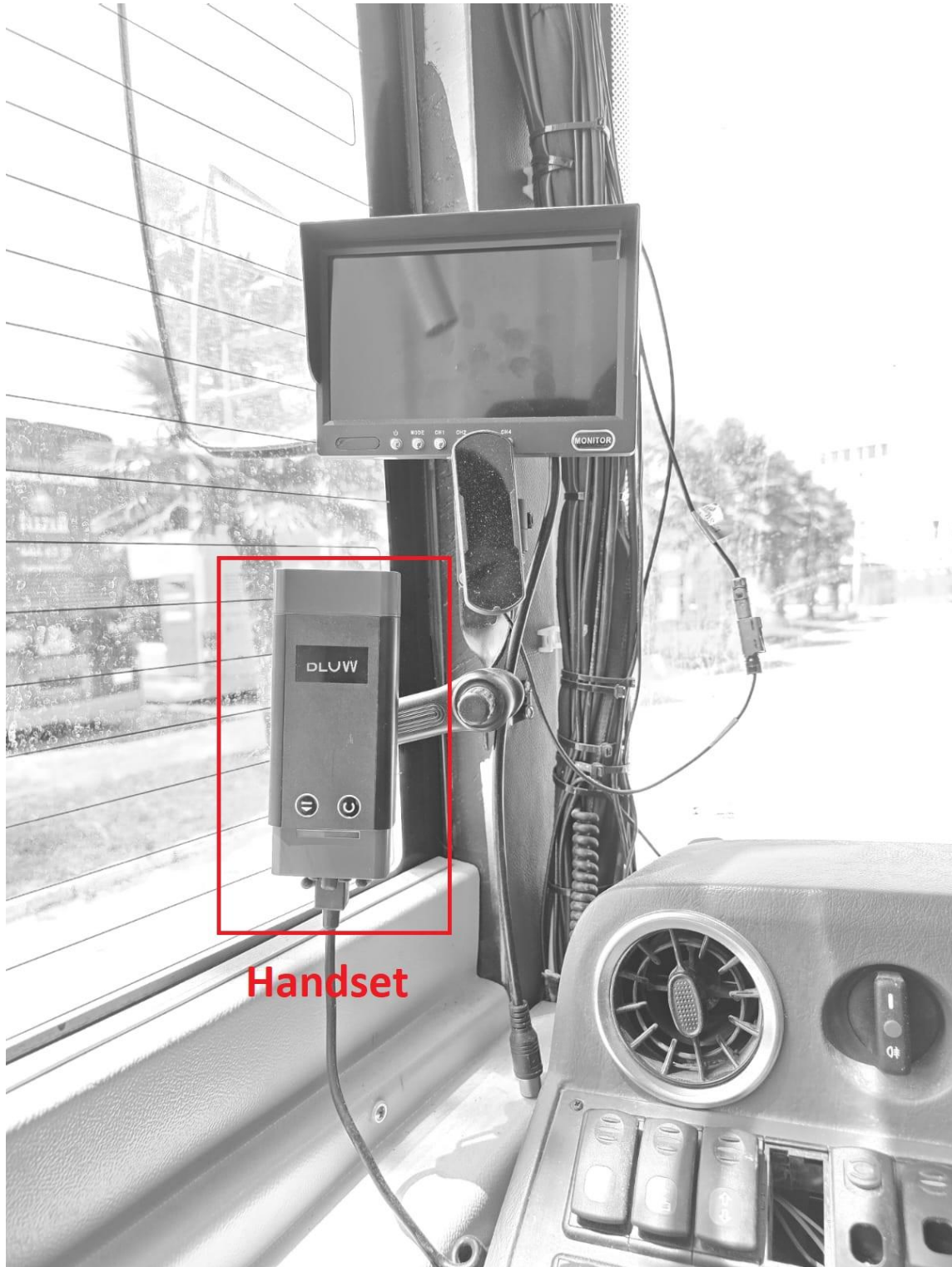


Figure 5

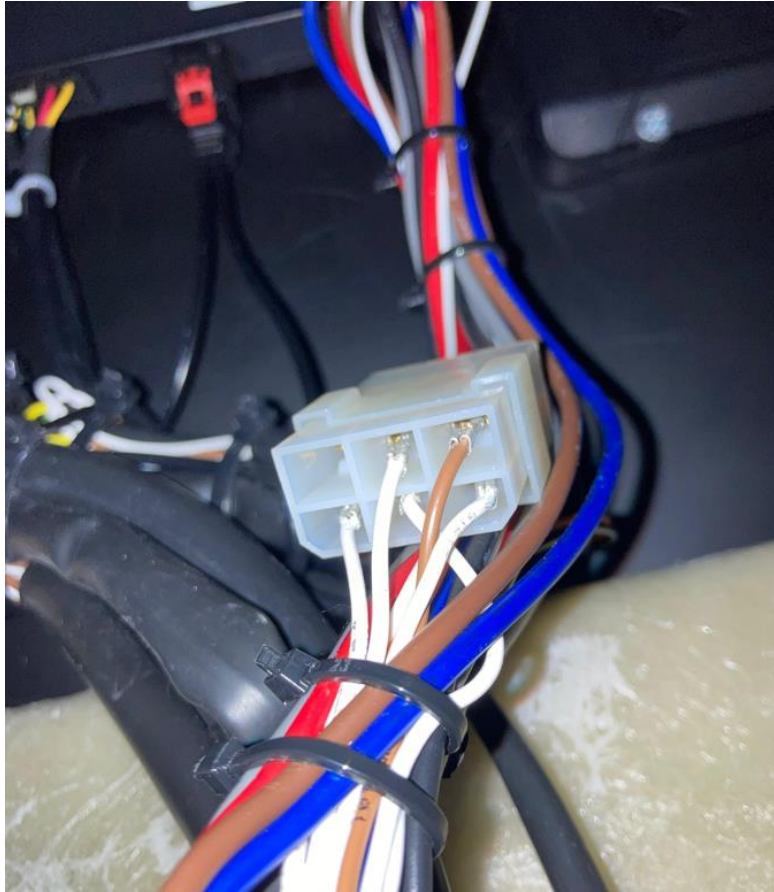


Figure 6

**General wiring diagram for EST (Engine Start Trigger) installation**

